

How to sign into a Google Classroom

To sign in for the first time

Go to classroom.google.com and click **Sign In**.



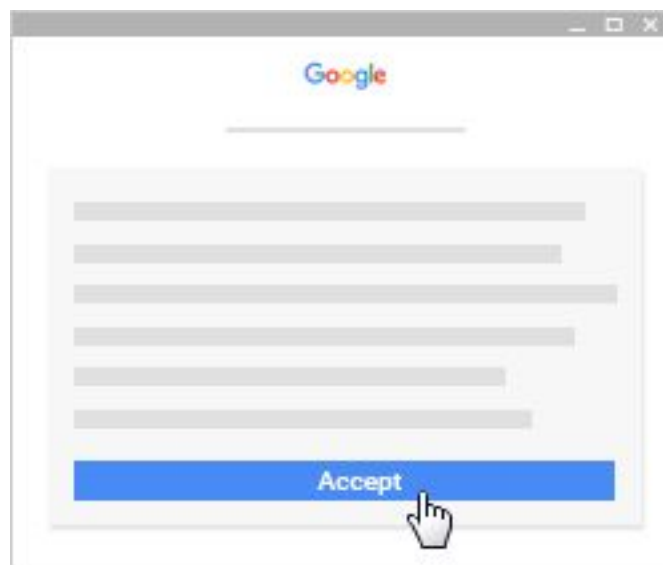
You must have a Google account to use Google Classroom. If you do not have a Gmail account, set one up at <https://mail.google.com>

Enter your Google Account username and click **Next**.

Remember: Your G Suite for Education username might look like *you@yourschool.edu*. Your personal account username might look like *you@example.com*.

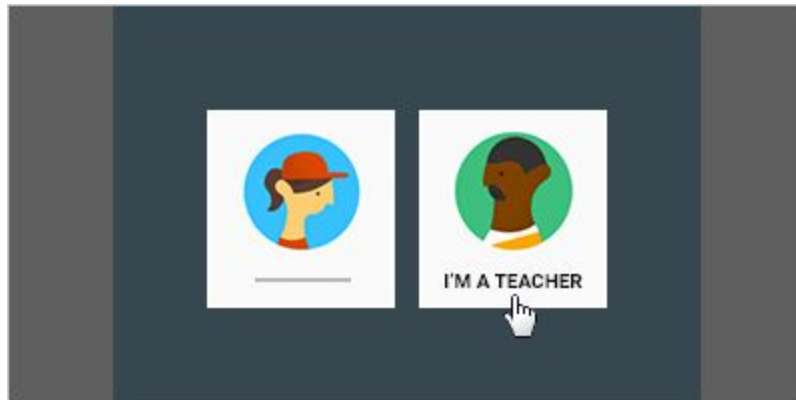


Enter your password and click **Sign in**.



If there is a welcome message, read it and click **Accept**.

If you're using a G Suite for Education account, click **I'm A Student**.



Click **Get Started**.



Download the app to your devices for quick access!

Join the SGS Shurley English Classroom by entering code 25ttziv

Need help? Email helpdesk@sgschoolbr.org